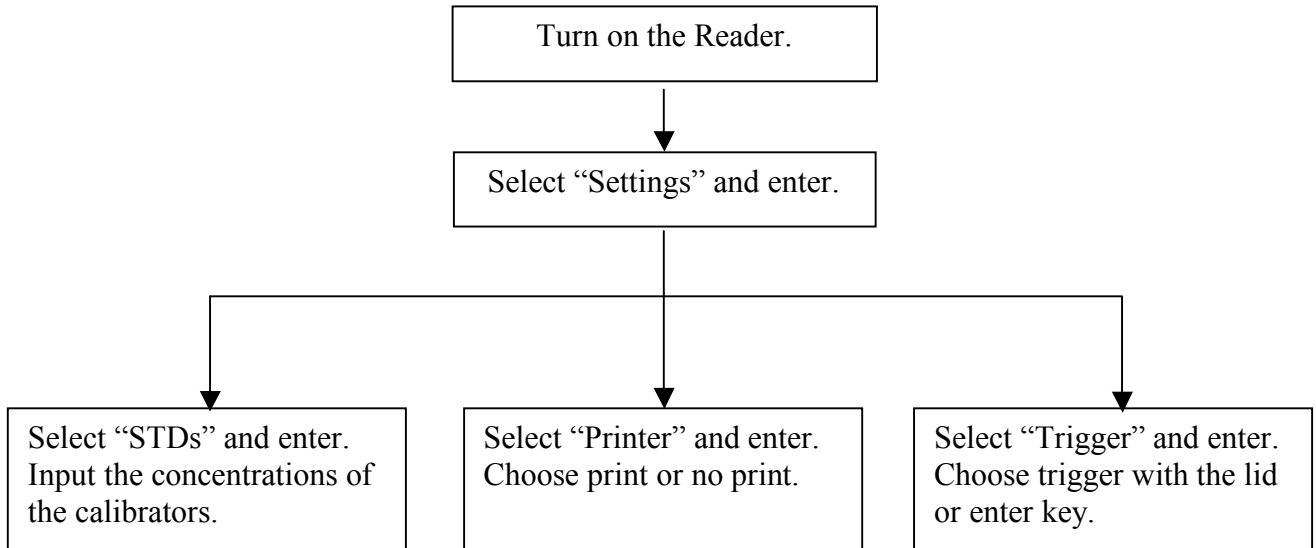


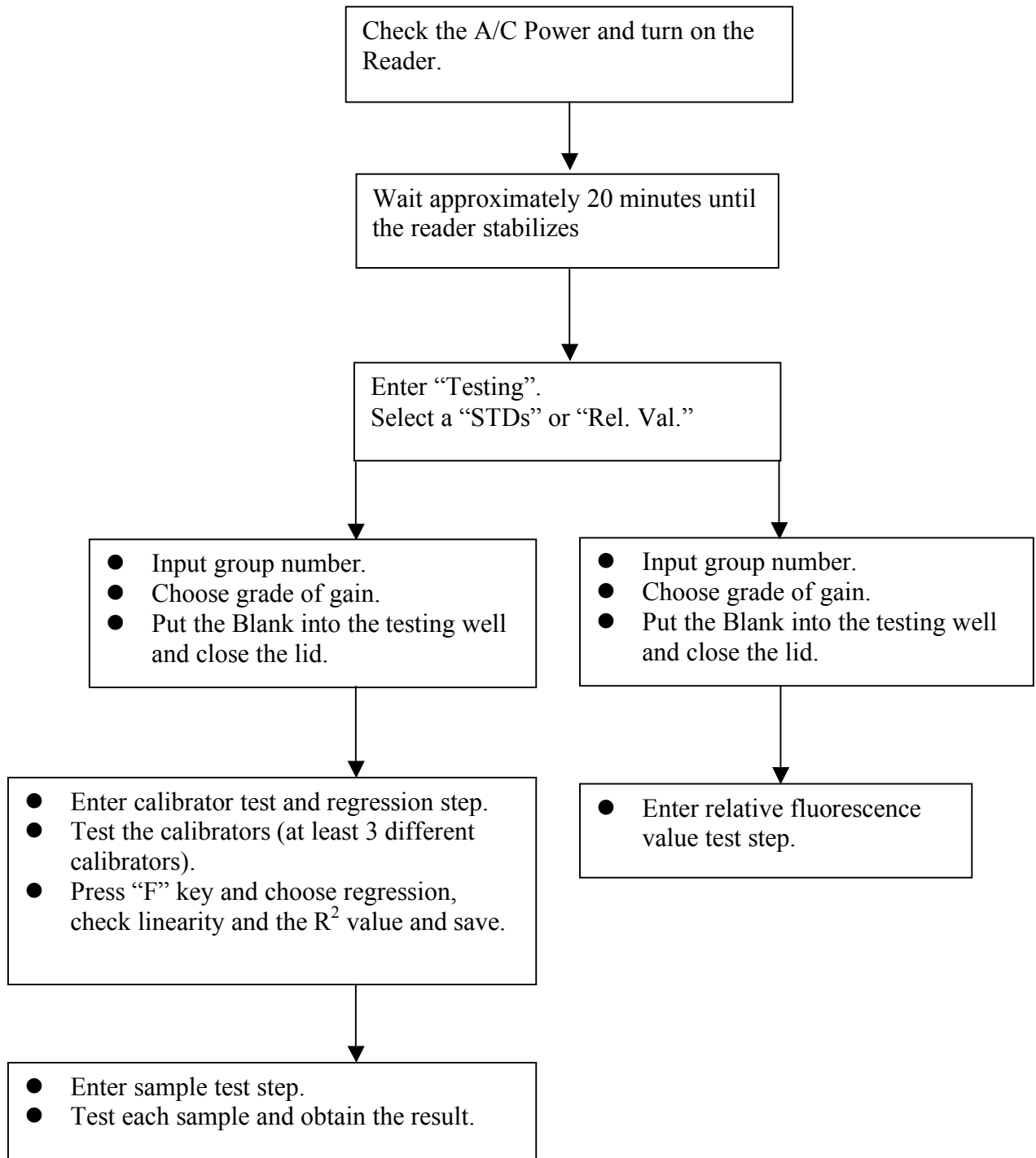
Operation Guide for the A/C Diagnostics fluorescence reader

1. Settings



STDs: Here you can set 3-10 STDs (STD0, STD1, STD1, ... STD9). That means you can set 10 different groups of standards (calibrators).

2. Testing



“Group number” is determined by the operator for one group of assays. Each group can consist of 100 test results.

“Grade of gain” is the parameter for the readings, which should be set up before measurement. The gain is the “X” in the calibration equation $Y=AX+B$, which is between 1.0-3.75.

“Blank” is the blank for the readings. A test blank can be read by putting a blank tube into the testing well or by an air blank by opening and then closing the lid once. “Regression” after reading calibrators, press the “F” key, and then enter “regression”, which will show the calibration curve, equation and the R^2 .

3. **Reports**

Select reporting on the main menu and enter.

- Find the date you want to look up using the “up and down” key.
- Enter to list the test results.
- Press Key F to print the results; transmit the results to computer or observe the regression line.